



# DOOR OPENER WITH PASSWORD & CARD 6000

## USER MANUAL



It obeys the rules of AEEE regulations.



## TABLE OF CONTENTS

<b>1. SPECIFICATIONS</b> .....	5
1.1 Technical Parameters.....	5
1.2 Factory Default .....	5
1.3 Light and Sound indicates .....	5
<b>2. INSTALLATIONS</b> .....	6
<b>3. PROGRAMMING GUIDE</b> .....	7
3.1 Programming Guide .....	7
3.2 How to reset to Factory Programming Password .....	8
3.3 Use ID explanation .....	8
3.4 How to change PIN .....	8
3.5 Authentication Mode for Card & PIN function.....	8

## **ACCESS CONTROLLER USER MANUAL**

Thank you for choosing access controller. This user manual was prepared for using the device more efficiently.

**ACCESS CONTROLLER HAS WARRANTY FOR 2 YEARS AGAINST MANUFACTURING DEFECTS.**

Multitek has rights to change the features of the device given in this document prior given any information.

**Manufacturer/Importer:** Multitek Elektronik San. Ve Tic. A. Ş.

**Headquarter / Factory:** Meclis Mahallesi Atatürk Cad. No: 47 34785 Sancaktepe / İSTANBUL

**Tel:** (0216) 420 38 38 **Fax:** (0216) 415 79 18

**E-Mail:** info@multitek.com.tr

## SAFETY WARNINGS

For your own and the device safety, you should obey the security warnings;

- Read the user manual carefully.
- Read the safety warnings carefully.
- Remarks about Transport, Shipment and Preservation  
During transport and shipment keep the product with its case. The case will protect the product against the physical damages.  
Don't put heavy weight on to the product or the product case. The product might be damaged.  
In case of falling, the product might have permanent damage which will make it non-operational.  
Deformation might be caused in case of extreme air conditions such as hot or cold weather. Life time of the electronic circuits tend to decrease in such conditions.
- Situations that might be dangerous to human or natural environment:  
Beware of the sharp pointed edges of the case,  
Recycle the product case in the proper recycling bin.
- Maintenance of the product  
The product doesn't need periodic maintenance. For maintenance and repair please consult to the authorized services.  
By rubbing with dry cloth, you can clean the product periodically.  
You can keep the product in its case, when you are not using it.  
Before cleaning the product, unplug the connection. Be careful that the cleaning material doesn't contain any solvent such as alcohol, gasoline or thinner.
- Place the product on a plain and stable wall.
- To prevent any kind of electrical shock, use the product with its original cable.
- Don't put any foreign substance in the product. And don't try to open it with devices that might cause electrical shock.
- When maintenance and repair are practiced in places other than the authorized services, the product might be damaged.
- Remarks about the energy consumption of the product  
The product is designed to work 24/7. Yet to prevent energy consumption, it should be unplugged when it won't be used for a long period of time. The user should be aware that each of the terminal stations that are left on use energy that is not needed.  
In case of malfunctioning please consult to an authorized service.

## 1.SPECIFICATIONS

### 1.1 Technical Parameters

Item	Value	Item	Value
<b>Operating voltage</b>	DC 12V±10%	<b>Storage</b>	M : 6000
			P : 1000
<b>Operating current</b>	< 100mA	<b>Card type</b>	EM(standard) /Mifare(optional)
<b>Operating temperature</b>	0°C—60°C	<b>Reading distance</b>	1—5CM
<b>Weight</b>	M : 400g	<b>Dimensions</b>	M : 125*80*23mm
	P : 120g		P : 86*86*17mm

### 1.2 Factory Default

Item	Value	Item	Value
<b>Authentication Mode</b>	Card or Password(PIN)	<b>Common PIN</b>	None
<b>Unlocking Duration</b>	5 S	Programming Password	123456

### 1.3 Light and Sound indicates

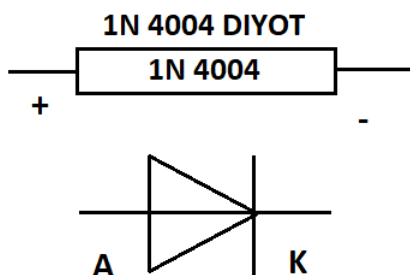
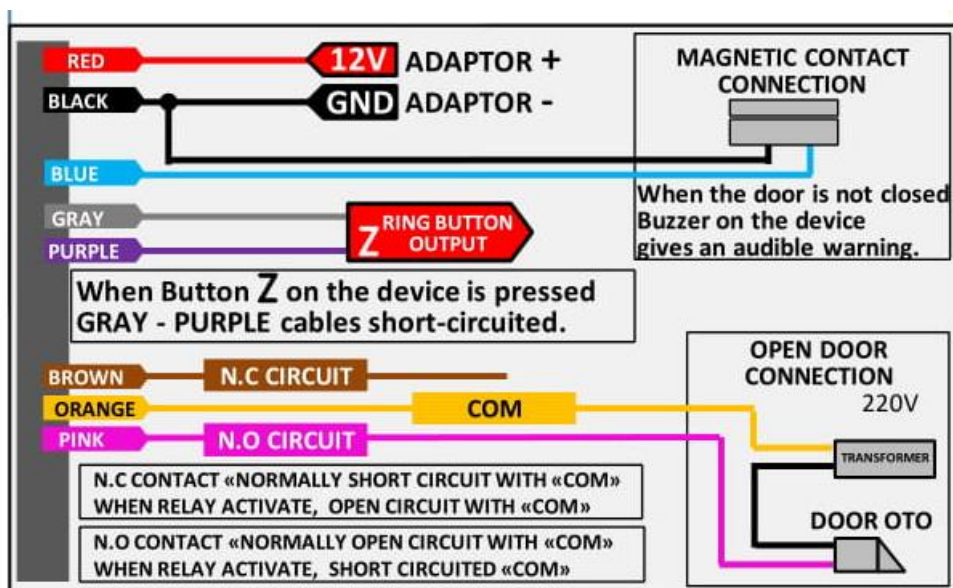
Light: red and green

Light Description	Indicates
Red light flash every 2 sec(Slow flash)	Standby state
Green light flash every 0.5sec(Fast flash)	Pending further operation
Red light is always ON	Programming state
Green light is always ON	Unlocking state
Red and green light flash alternately	Restoring Factory Programming Password

Sound: beep

Sound Description	Indicates
1 short beep	Valid input
3 short beeps	Invalid input
1 long beep	Programming state
3 long beeps	Restoring Factory Programming Password

## 2. INSTALLATIONS GUIDE



### Remark:

If let relay drive electric-lock, please connect a backward diode with the lock's "+" and "-" poles.

### 3. PROGRAMMING GUIDE

#### 3.1. Programming Guide: (Programming Password Default: 123456)

Remark: All password can be 3~6 digits.

Programming Item		Press key and swipe card operations	Remark
<b>Basic Function</b>	Change Programming Password (Pro.PW)	# Pro.PW # 0 new Pro.PW # new Pro.PW #	If Pro.PW lost, perform 3.2 to reset to Factory Default (123456)
	Add user card	# Pro.PW # 1 swipe cards #	If add series cards, swipe cards continuously
	Configure Common PIN	# Pro.PW # 21 new Common PIN #	Common PIN is only one, Unlocking method : Enter Common PIN then press [#]
	Delete all users	# Pro.PW # 40 0000 #	Delete all cards and PIN except Common PIN
	Delete user by swiping card	# Pro.PW # 41 swipe cards #	If delete series cards, swipe cards continuously
<b>Expand Function</b>	Add user by input User ID	# Pro.PW # 22 4-digit User ID swipe card #	Add user card or PIN by user's ID. User ID must be 4 digits and cannot be reused (3 beeps means reused and need to enter a new). If add series users repeat the operation. More about User ID see 3.3
	Add PIN	# Pro.PW # 23 4-digit User ID new PIN #	
	Delete user by User ID	# Pro.PW # 42 4-digit User ID #	
	Delete user by card No.	# Pro.PW # 43 card No. #	Card No. is 10-digit or 8- digit, device auto-identify
	Configure Unlocking Duration	# Pro.PW # 5 XX #	XX is 2-digit (00~99). If XX is 00, Unlocking Duration is 0.2s
	Configure Authentication Mode	# Pro.PW # 6 XX #	XX can be 01(only Card)/02(Card or PIN)/03(Card & PIN)
	Reader setting (For options)	# Pro.PW # 6 04 #	The machine can be used for reader(W26 output)
	Backlight setting(For options)	# Pro.PW # 8 XX #	XX can be 01/02/03 (Normal ON / Normal OFF / Auto)
	Reset Factory Default	# Pro.PW # 8 99 #	Except Programming Password and Manager Card

### **3.2 How to reset to Factory Programming Password (123456)**

Step1, Turn off power and connect OPEN and GND terminal. Turn on power then there is 3 long beeps with green and red light flashing alternately.

Step2, Turn off power, disconnect OPEN and GND terminal. Turn on power again. Initializing Programming Password is completed.

### **3.3 Use ID explanation**

User ID is 4-digit number from 0001 to 9999. There is no User ID for the users added by command [1]. Perform command [40] to clear all User ID.

### **3.4 How to change PIN**

Swipe card or press PIN to unlock within 5s press [#] for 3s until the green light flash fast, then press [new PIN # new PIN #], the new PIN changed successfully with a long beep.

### **3.5 Authentication Mode for Card & PIN function**

Setp1, When Authentication Mode is [Card or PIN] (factory default), according to the step 3.4 to configure the PIN of the card.

Setp2, Press [# Programming Password # 603 #] to configure Authentication Mode to be [Card & PIN].

Setp3, Swipe user's card with green light fast flash then input [PIN #] with green light normally ON, the door opened successfully.